

Central Primary School is part of the Bedford City School District, and serves grades K-2. The original facility was built in 1905, with subsequent additions in 1959 and 1965. Different floor levels of the buildings were connected via stairs only. With an increasing handicapped student enrollment - as well as a need to provide a new bus drop-off main entry at the back of the building - the District commissioned Irie Kynyk Goss Architects to provide architectural services for the Addition to Central Primary School.

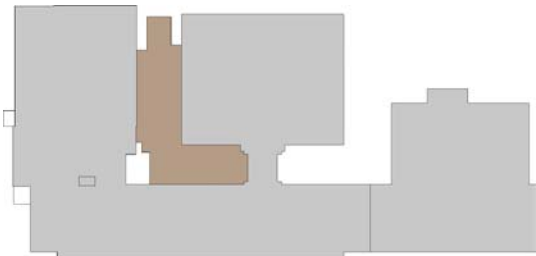
Initial investigations concluded that the layout of the building did not lend itself to installation of an elevator to connect the floor levels. Instead, a new main entry atrium space was created by enclosing an L-shaped exterior courtyard. The various floor levels were connected with a series of stairs and ramps within this space. Translucent skylight panels and glass block walls bring natural light into the space.



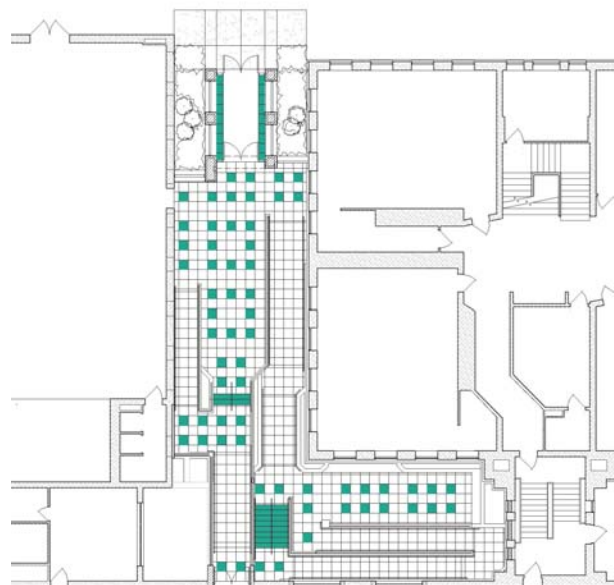
Addition to Central Primary School, Interior



Addition to Central Primary School, Interior



Addition to Central Primary School, Key Plan



Addition to Central Primary School, Partial Floor Plan